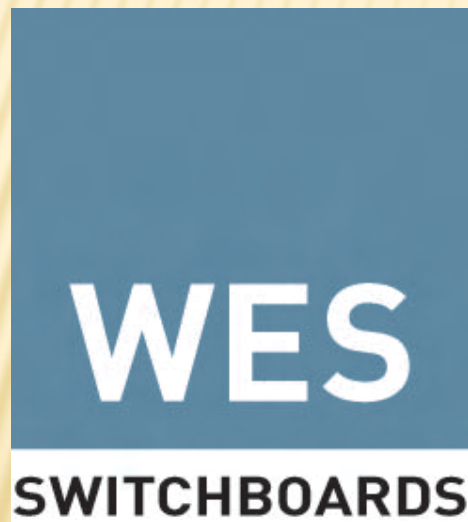


# permagroup **pty** ltd



# Group Profile



## **Permagraphics**

Specialist design & manufacture of customised industrial labeling, signage & identification products



## **WES Switchboards**

Designers & builders of motor & process control centres, supervisory control centres, power distribution boards and pneumatic control panels

# History

---

## **Permagraphics**

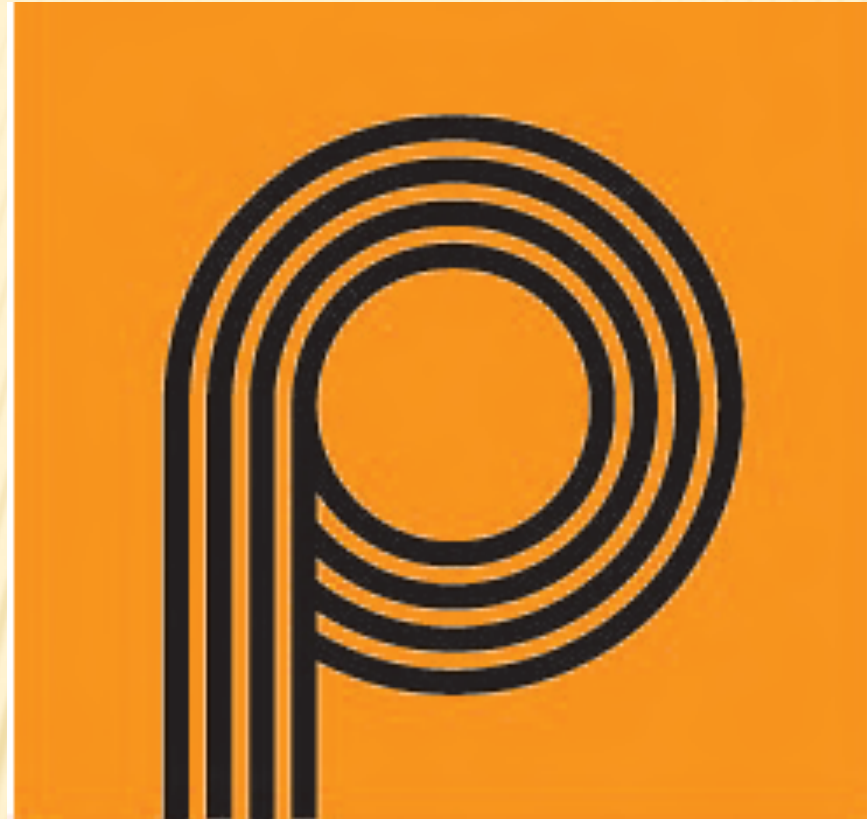
- + Established 1982 supplying the marine industry

## **WES Switchboards**

- + Est. 1980 as EGW Controls
- + 1990 began trading as Waterhouse Engineering Services (WES)
- + WES bought by Permagraphics owners in 2004

## **Permagroup established**

- + New purpose built premises built in 2009



**PERMAGRAPHS**

# Capabilities

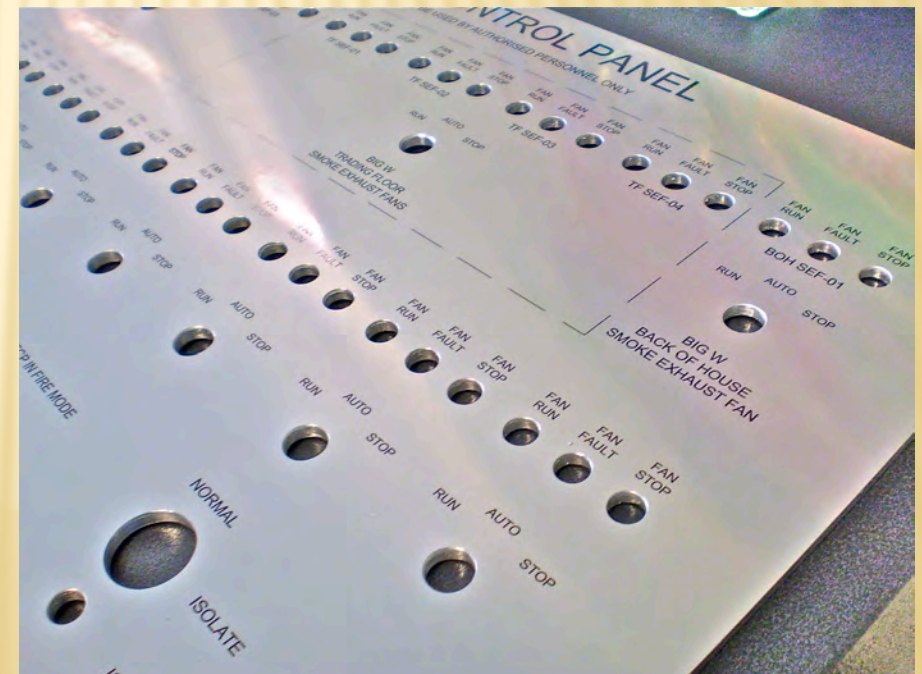
NAME, RATING AND MANUFACTURERS' PLATES

+ aluminium, stainless steel or brass





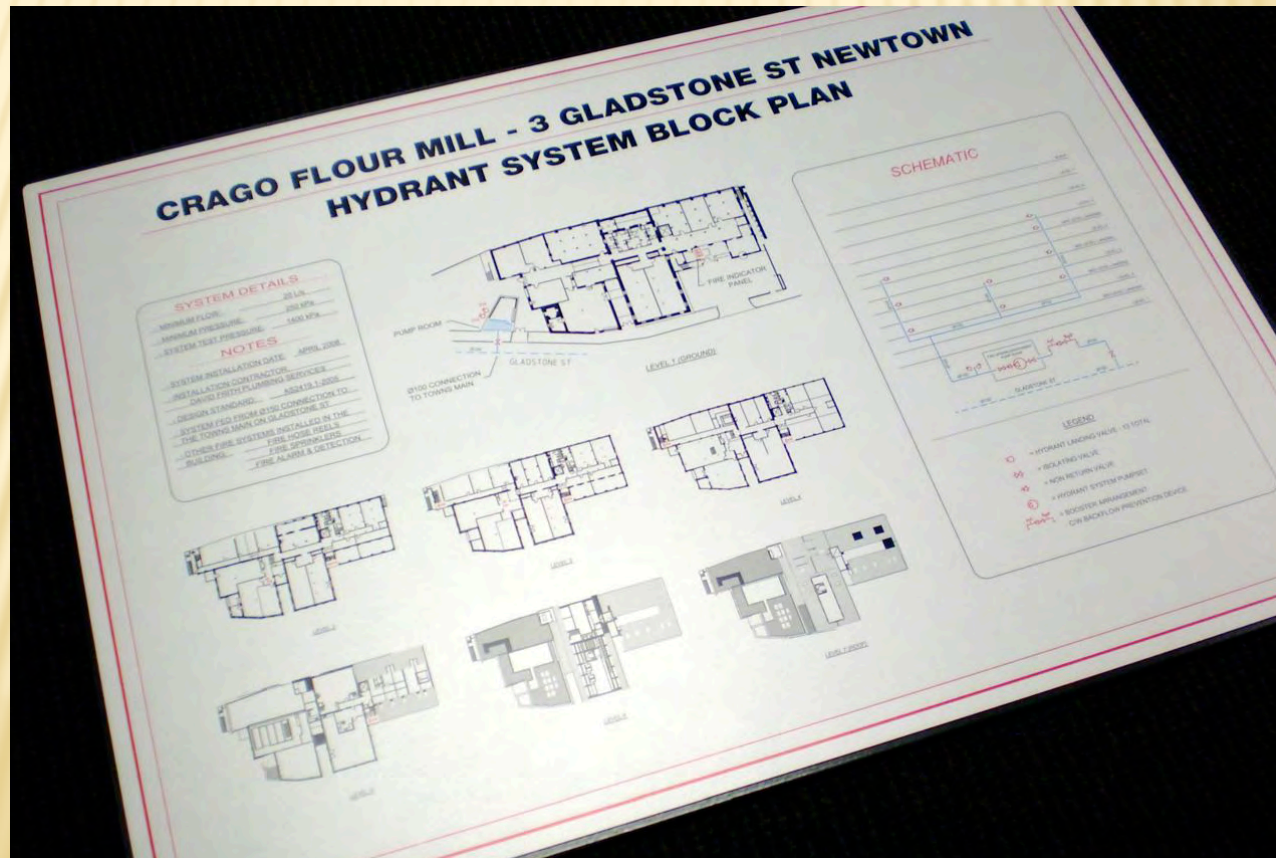
- + Variety of metals or plastic for electrical and electronic industries



# Capabilities Cont.

## BLOCK PLANS

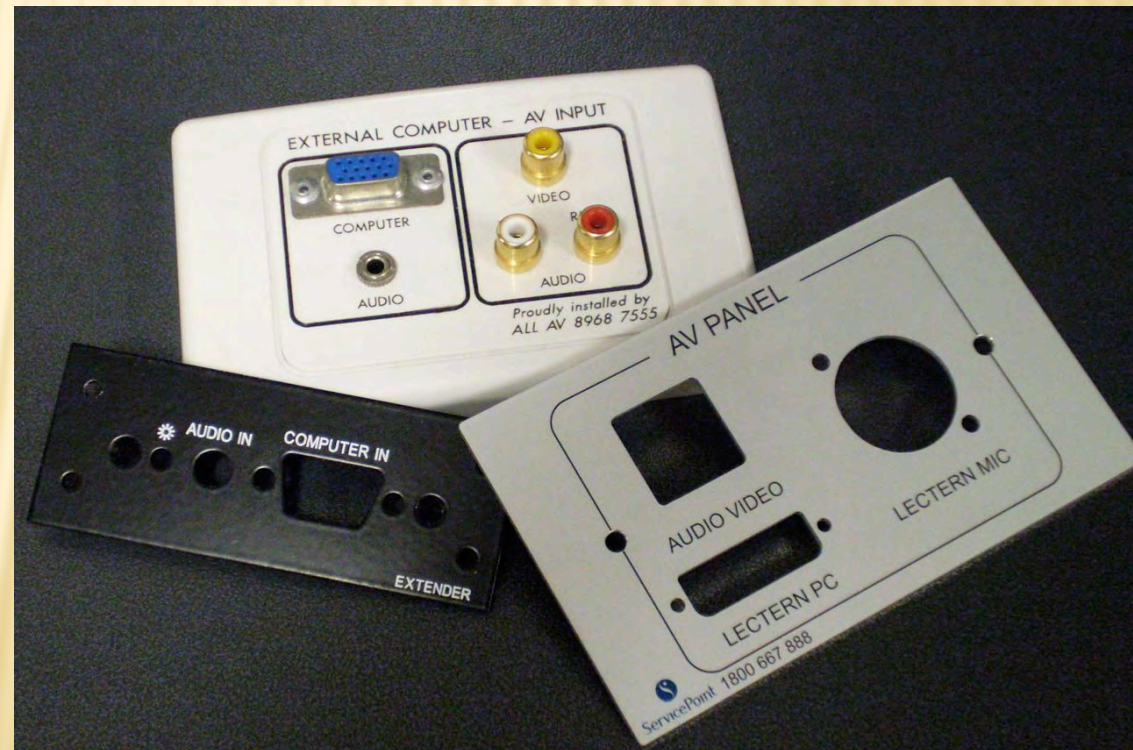
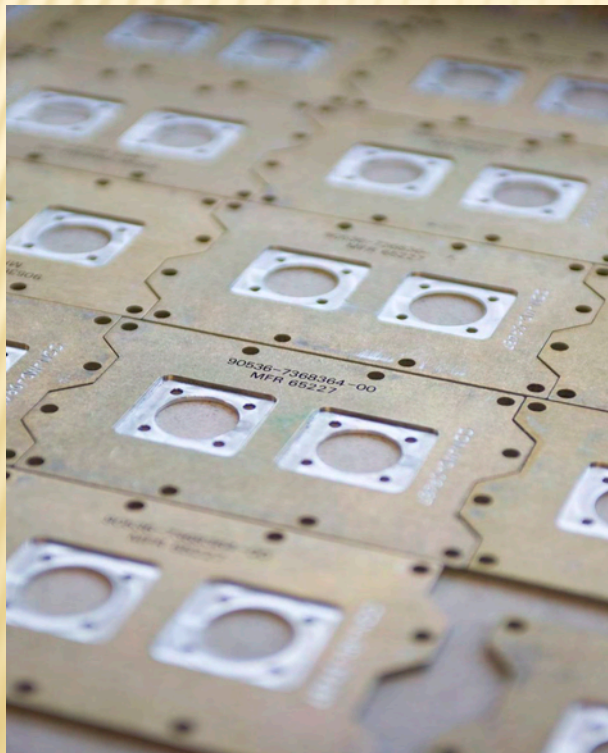
- + aluminium, stainless, brass, acrylic or vinyl. Fade and heat resistant



# Capabilities Cont.

## CUSTOMISED SWITCH PLATES

- + either 'off the shelf' plastic plates, stainless or aluminium or custom made to spec.



# Capabilities Cont.

## INDUSTRIAL LABELS & SIGNS

- + engraved, etched or printed on metal or plastic.
- Chemical, heat and wear resistant. Some processes offer an exterior life up to 20 years.



# Capabilities Cont.

## MEMBRANE FACIAS

+ incorporating touch panels and clear windows



# Capabilities cont.

## SCREEN, DIGITAL & THERMAL PRINTED LABELS

- + wide range of self adhesive metals, foils or plastics on rolls or sheet format



# Capabilities cont.

## COMMEMORATIVE, CIVIC, ARCHITECTURAL INTERPRETIVE & WAYFINDING SIGNAGE

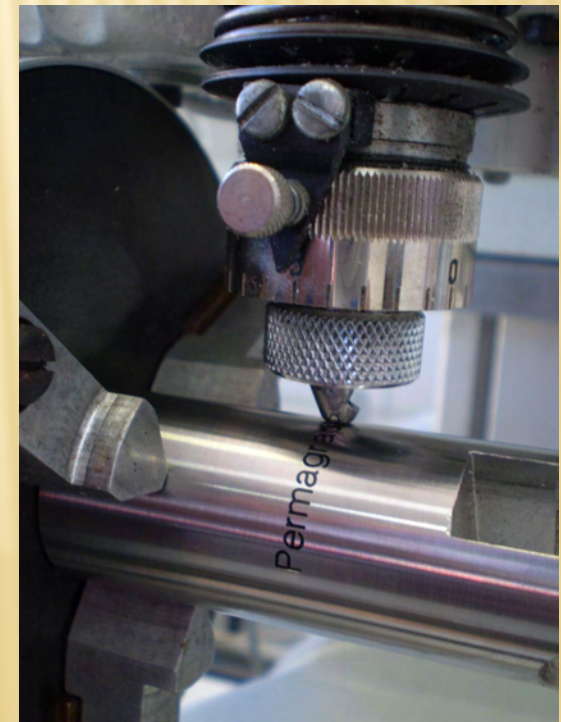
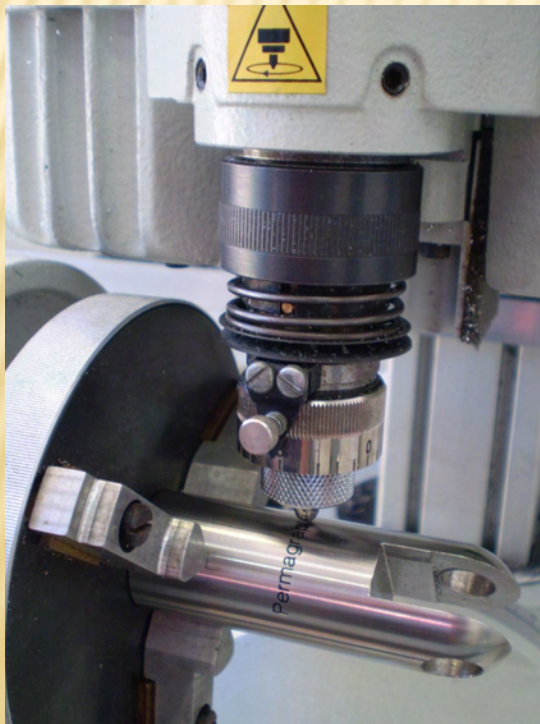
- + stainless steel, aluminium, brass, bronze, durable and fade resistant plastics with various surface treatments and finishes



# Processes

## INDUSTRIAL ENGRAVING

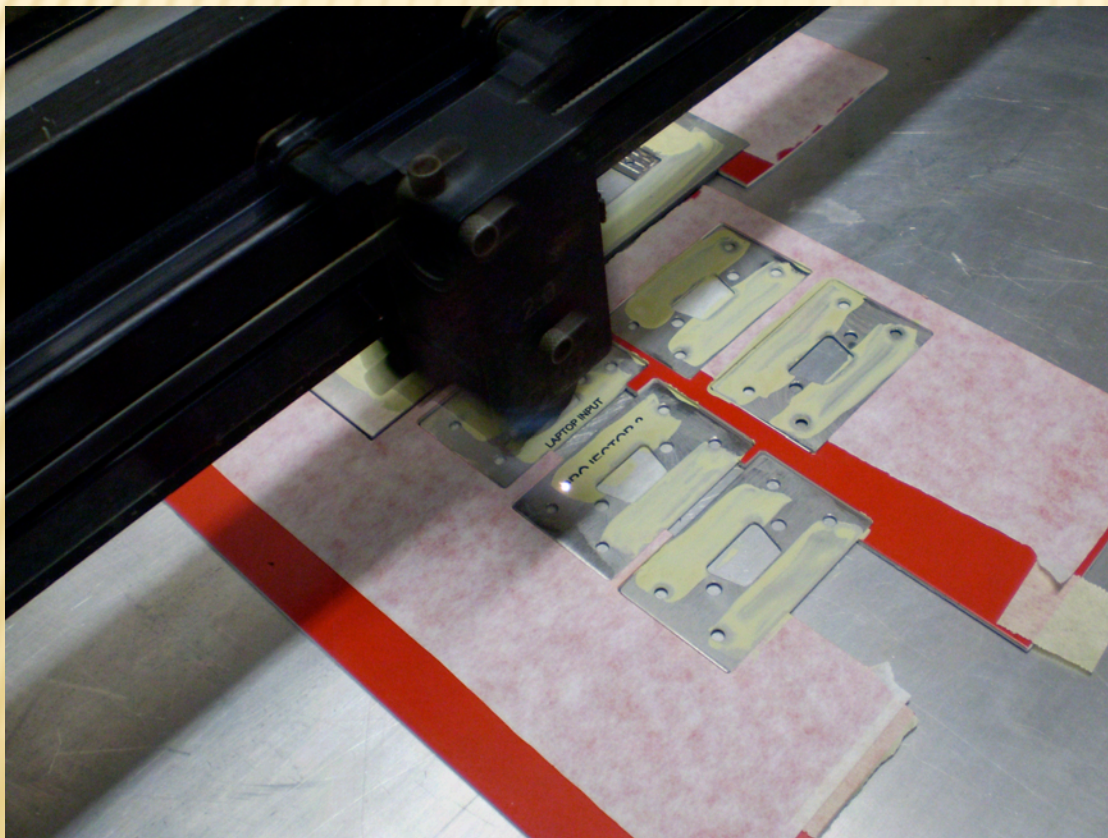
- + using the latest CNC equipment for marking or identification of stainless steel, brass, aluminium, mild steel or plastic parts and components



# Processes

## CNC LASER MARKING ETCHING & CUTTING

- ✕ a range of ferrous metals, plastics, glass, acrylics, treated and painted surfaces





# Hassle Free Service

## DESIGN and ARTWORK

- ✕ We can work with a variety of customer provided file or we can take of care the artwork for you





# Technical Information

## We use only Quality Materials

- + We source and import a range of specialised nameplate and labeling materials from Germany, Switzerland and the U.S. including Metalphoto® a MIL SPEC aluminium used by U.S. defense forces

## Environmentally Friendly Products

- + The plastics & adhesives we use meet RoHS (Restriction of hazardous substances) directives

# WES Switchboards



# Design & Engineering

- ✦ System Design and drawing using the latest AutoCAD programs, including General Arrangements and Schematic Diagrams.



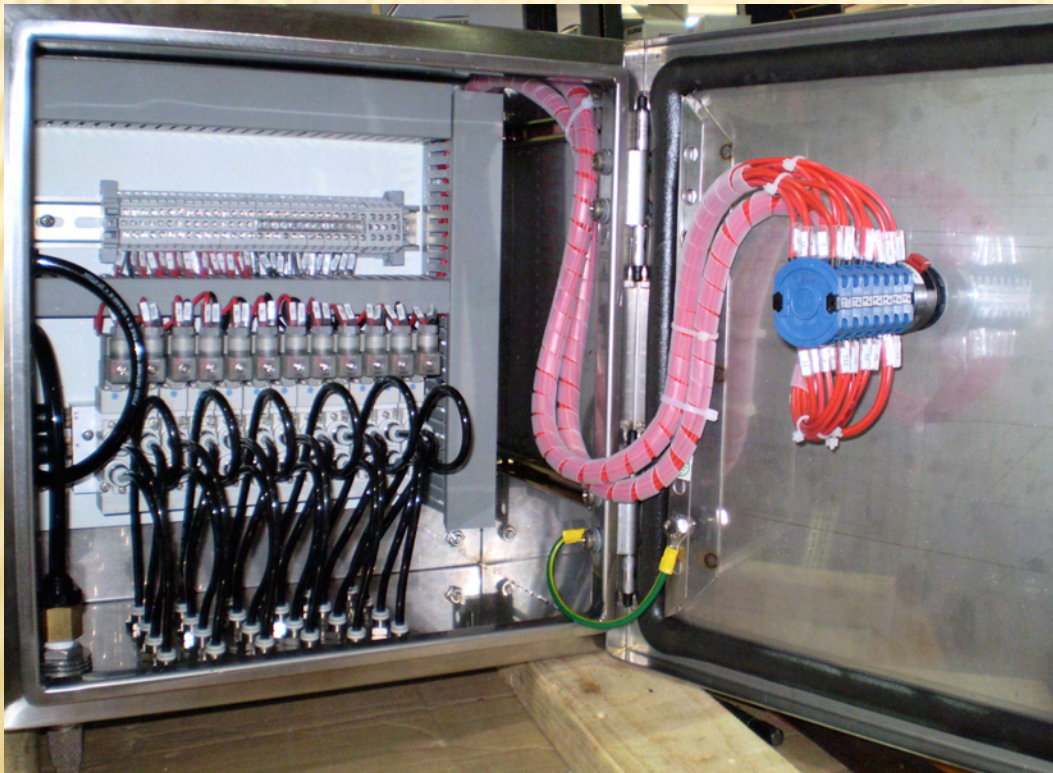
# Manufacturing

- ✖ Full fabrication, fit out, cabling, wiring, identification tags, assembly of free issue components or supply of specified equipment



# Testing & Certification

- ✘ Factory acceptance testing, functional testing, comprehensive inspection and test plans.



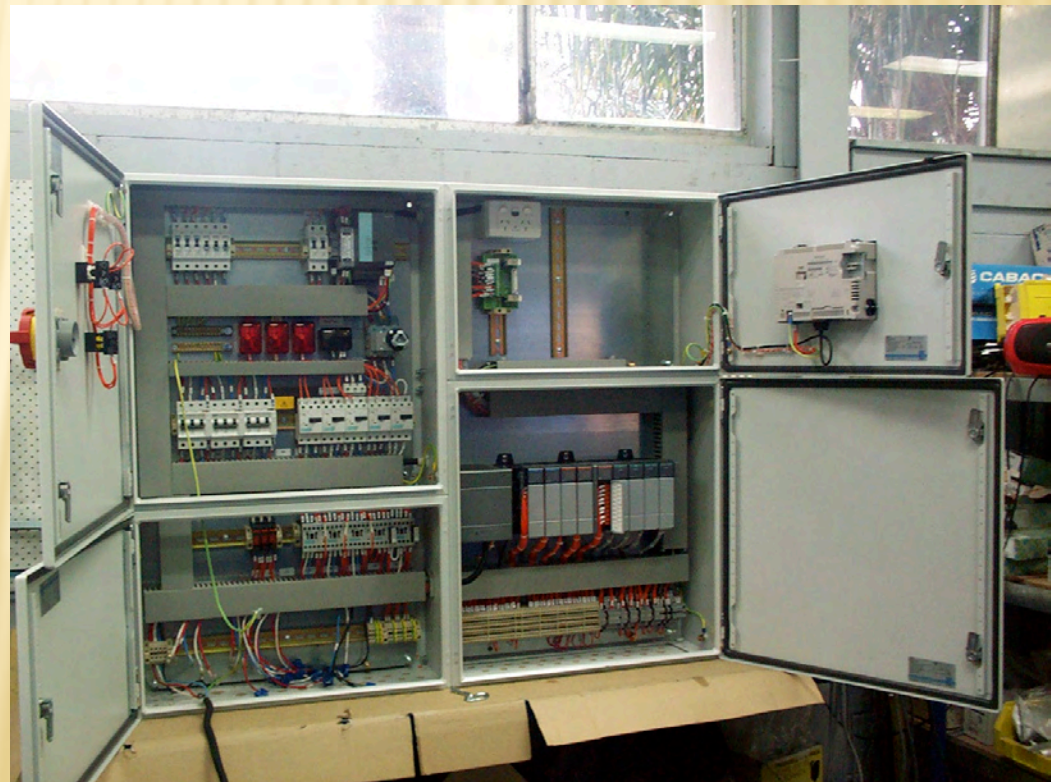
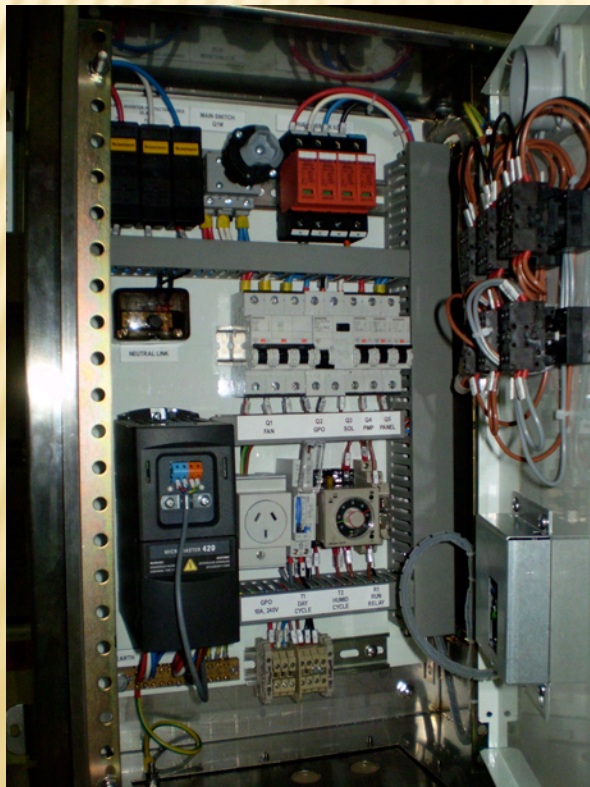
# Cabinets & Enclosures

- ✖ Custom builds in a variety of finishes including; Stainless Steel, Zinc Annealed Steel, Painted or Powdercoated and High Impact Plastics.



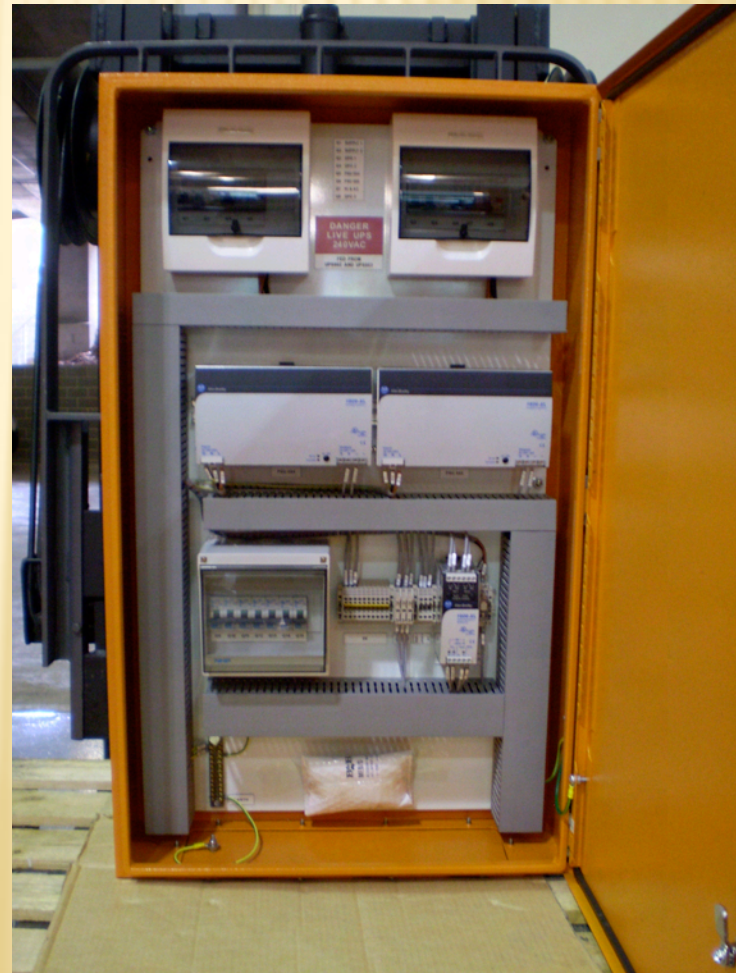
# Programmable Logic Controllers (PLC's)

- ✖ Instrumentation Panels & Relay Control Panels incorporating manufacturers likes Siemens, Allen Bradley, Schneider, GE Fanuc, & Omron.



# Power Distribution Boards

- ✘ Manufacture of form 1, 2, 3 & 4 switchboards



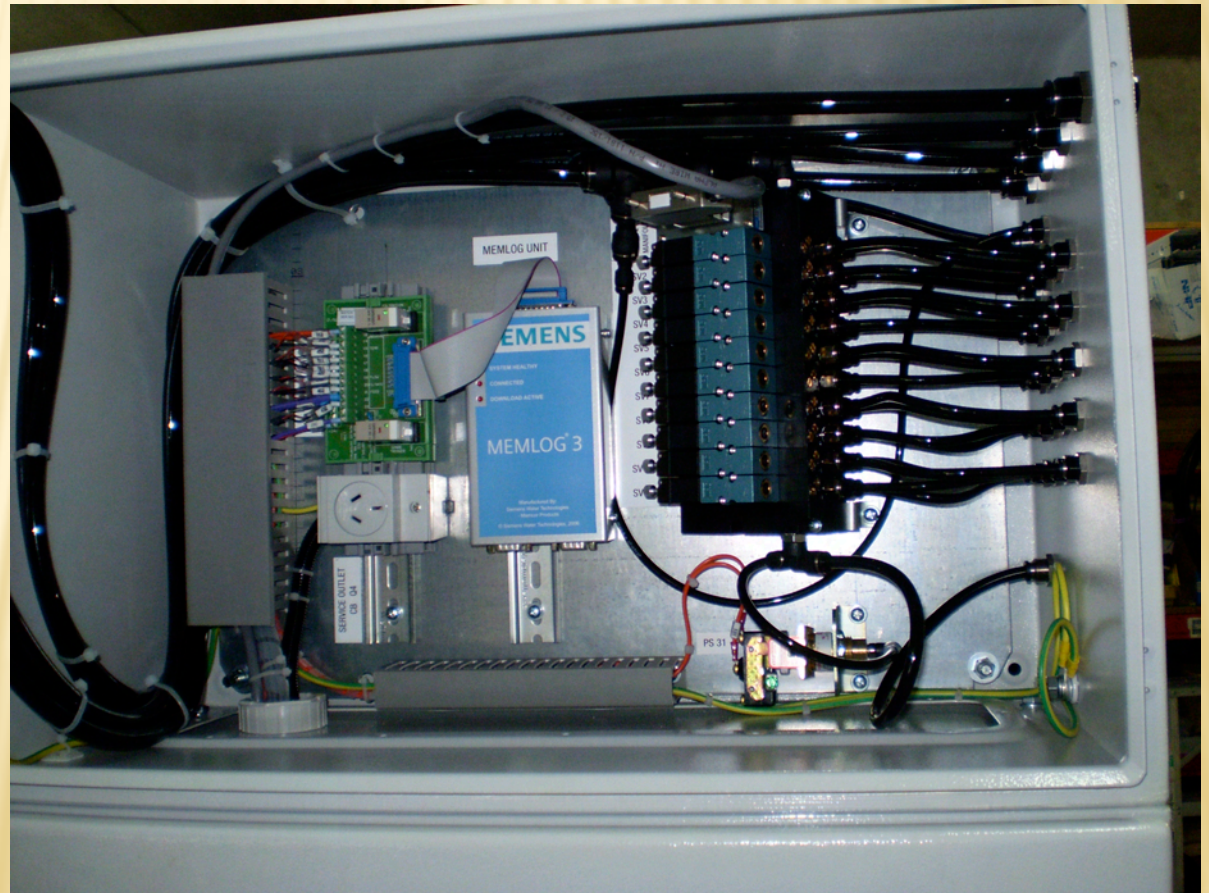
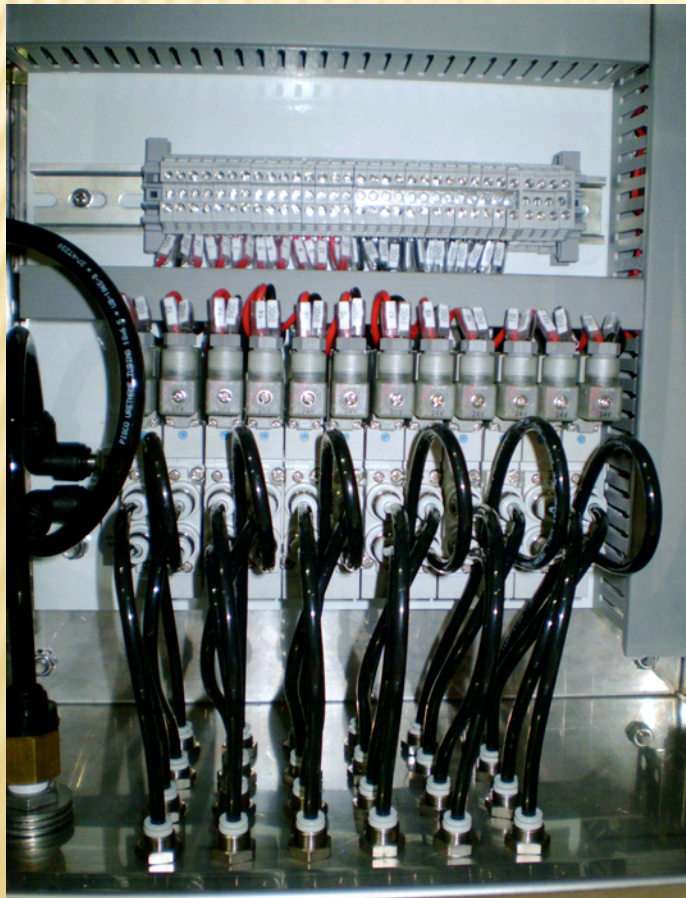
# Motor Control Centres (MCC's)

- ✘ Custom built or standard products, form 1, 2, 3 or 4 segregation and type-tested systems.  
VSD's using Fuji, Allen Bradley etc



# Pneumatic Control Panels

- ✗ Individually designed panels for industrial applications



# Sydney Water Reference Jobs

- Liverpool – Ashfield pipeline – 15 x VSD cabinets
- Warriewood STP - PLC & MCC upgrades
- St Marys STP - New PLC
- Shellharbour STP – PLC upgrades
- Cronulla STP – PLC for Tertiary treatment upgrade
- Waterloo – WP0008 – HV pump controls
- Georges Hall – SPS 924 – starter panels
- Rouse Hill – various panels for recycled water plant
- St Marys STP – DAF plant & operator panels
- Quakers Hill STP – starter panels
- Clifton Gardens SPS - starter panels
- Various Stainless Steel PS & Dosing System panels



# Contact Details



T: 02 9997 8133 F: 02 9997 2255

Unit 1, 6 Jubilee Ave, Warriewood

info@permagroup.net.au www.permagroup.net.au